

17x17ft Pagoda



Our professional-grade tents can mix and match frame and fabric quality, roof styles, colors, customizations, and more.

Rely on your Product Expert or visit our quick links:

[Mastertent Website](#)

[3D Tent Configurator](#)

[Tent Sizes](#)

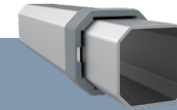
[Photo Gallery](#)

[Construction Details](#)

[Warranties & Certificates](#)

Frame Specifications

S1



Frame Construction

Frame Material	3x Strong, All-Aluminum (T606)
Leg Shape & Profile	Octagonal Leg, 43mm (2.5mm)
Truss Profile	30x15mm (2.8mm)
Connecting Elements	✓ Aluminum with Rubber Caps
Push-Button Locks	✓ Comfort Press
Corner Brackets	✓ Spring Tension & Corner Clips

Weight

152.7lbs. (69.4kg)

Transport Bag

Heavy-Duty PVC with Window

Customization Options

Roof Styles



Frame Colors

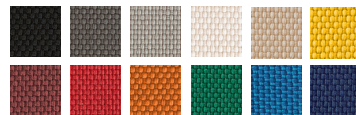
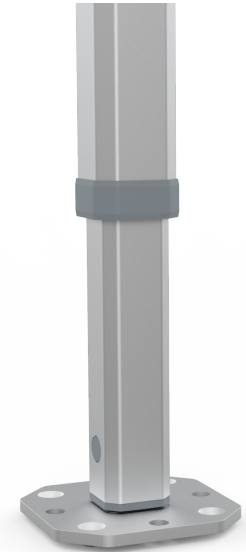


Frame Height Extensions

✓ Up to 36"

Peak Flag Capable

✓ Frame & Roof Integrated



Custom Printing

Individual Logo or Full Surface



Roof Fabric Options

Pirontex®, Oxford Weave 500D Polyester, Heavy-Duty PVC, Fiberglass, Loden

Textile Properties

Pirontex®

Oxford 500D

Waterproof Rating

(DIN EN 20811)

✓ 5x Industry Avg

5,000mm Water Column

✓ 2x Industry Avg

1,600mm Water Column

Fire Rating Class

B - s2, d0 (difficult to ignite)

NFPA 701, CPAI-84 Sec.6, EN 13501-1:2019,

CAN/ULC-S109, CA Title 19 Sec. 1237

Color Fade Resistance

(DIN EN ISO 105-B02)

Extreme

(blue scale 7.0-8.0 of 8.0)

Durable

(blue scale 4.5-6.5 of 8.0)